

WEITZNER

Hanging Instructions

Baroque W1089

Do not cut or install until you have read these instructions. Weitzner recommends hiring a professional wallcovering installer. For a list of professional installers, please visit www.wallcoveringinstallers.org
View the hanging instructions video at www.weitznerlimited.com/videos/paperbacked-textile

WALLCOVERING PREPARATION:

- Do you have the right amount of wallcovering yardage? If not, stop and contact your local sales representative.
- Make sure your tools, hands and workspace are clean.
- Never crease the wallcovering, and avoid touching the face.
- Inspect the wallcovering before installing to ensure it is free from defects.
- Install a **maximum of 3 sheets**, then inspect application. If satisfactory, continue. If not, discontinue and contact your local sales representative.

WALL PREPARATION:

- Make sure the surface you are hanging on has been properly prepared.
- Walls should be clean, smooth, dry and structurally sound.
- Repair any holes or flaws in the walls prior to installing wallcovering.
- We recommend priming walls before installing the wallcovering using Zinsser® Shieldz® or equivalent wallcovering-specific primer.
- Do not hang wallcovering directly on an oil-based primer.

ADHESIVE:

- We recommend Roman® 838 or equivalent clear, non-strippable, starch-based adhesive.
- It is advisable to apply adhesive to the back of the wallcovering using the booking method, allowing 3 to 5 minutes for proper set-up time.
- For difficult installations, such as columns or outside corners, apply the adhesive to both the wall and the back of the wallcovering and allow each surface to tack up before installation.

TRIMMING:

- The edges of this wallcovering are factory trimmed. For the repeat pattern to match, you must use the factory edges and butt the seams of this wallcovering.
- We recommend trimming a clean, straight edge on your work table and butting the seams of this wallcovering.
- We do not recommend double cutting this wallcovering.
- Trim material at the ceiling, baseboard, windows and doors with a single-edged razor blade.
- Always use a new, very sharp blade for each cut.

CONTINUED >

Weitzner assumes no responsibility for installation of material beyond 3 sheets and will not be held responsible for labor under any circumstances. For any questions, contact your local representative.

WEITZNER

Hanging Instructions

Baroque W1089

Do not cut or install until you have read these instructions. Weitzner recommends hiring a professional wallcovering installer. For a list of professional installers, please visit www.wallcoveringinstallers.org
View the hanging instructions video at www.weitznerlimited.com/videos/paperbacked-textile

REPEAT:

- W 25 5/8" H 25 5/8"
- This wallcovering has a straight-match repeat pattern.
- We recommend lining up the repeat at eye level and allowing the top and bottom of the wallcovering to shift if necessary.

RECOMMENDATIONS:

- If you decide to hang multiple drops of this wallcovering, they should be trimmed and hung as they are unrolled. It is not recommended to reverse hang this wallcovering.

CARE INSTRUCTIONS:

- Liquid stains should be removed immediately by blotting with a clean, damp, white cloth. Regular vacuuming with a soft brush attachment may be used to remove dust deposits.

SPECIAL NOTES:

- \$3.00/yard additional fee for orders below 30 yards.
IMO requirement must be specified with order.

CONTINUED >

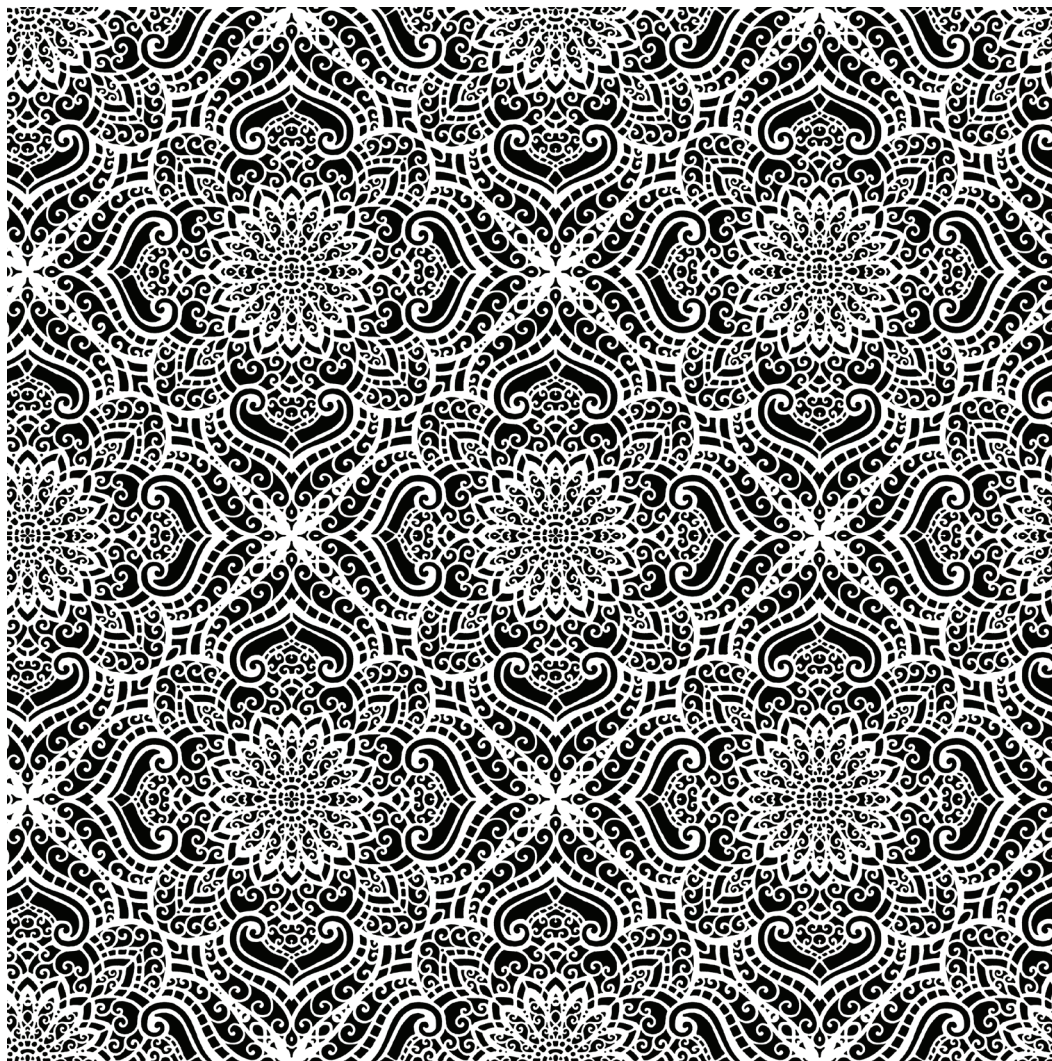
Weitzner assumes no responsibility for installation of material beyond 3 sheets and will not be held responsible for labor under any circumstances. For any questions, contact your local representative.

WEITZNER

BAROQUE W1089

51" pattern width

25 5/8"
repeat



25 5/8 repeat