

WEITZNER

Hanging Instructions

Fleur W5031

Do not cut or install until you have read these instructions. Weitzner recommends hiring a professional wallcovering installer. For a list of professional installers, please visit www.wallcoveringinstallers.org
View the hanging instructions video at www.weitznerlimited.com/videos/vinyl

WALLCOVERING PREPARATION:

- Do you have the right amount of wallcovering yardage? If not, stop and contact your local sales representative.
- Make sure your tools, hands and workspace are clean.
- Never crease the wallcovering, and avoid touching the face.
- Inspect the wallcovering before installing to ensure it is free from defects.
- Install a **maximum of 3 sheets**, then inspect application. If satisfactory, continue. If not, discontinue and contact your local sales representative.

WALL PREPARATION:

- Make sure the surface you are hanging on has been properly prepared.
- Walls should be clean, smooth, dry and structurally sound.
- Repair any holes or flaws in the walls prior to installing wallcovering.
- We recommend priming walls before installing the wallcovering using Zinsser® Shieldz® or equivalent wallcovering-specific primer.
- Do not hang wallcovering directly on an oil-based primer.

ADHESIVE:

- For Weitzner Clean Vinyl wallcoverings, we recommend Roman® ECO-788 or equivalent clay-based adhesive.
- Dry Hang: For this hanging method, do not dilute the adhesive. Roll a liberal, even coat of the full-strength adhesive on the wall and apply the wallcovering.
- Wet Hang: For this hanging method, the adhesive can be diluted with water according to the manufacturer's instructions. Apply a liberal, even coat of adhesive over the entire back of the wallcovering with either a commercial pasting machine or a roller. Allow the material to book for 15 minutes before installation.
- For difficult installations, such as columns or outside corners, apply the adhesive to both the wall and the back of the wallcovering and allow each surface to tack up before installation.

TRIMMING:

- The edges of this wallcovering are factory trimmed.
- We recommend trimming a clean, straight edge on your work table and butting the seams of this wallcovering to achieve the correct side match.
- Alternately, you may double cut this wallcovering, making sure to overlap the pattern perfectly to achieve the correct side match.

CONTINUED >

Weitzner assumes no responsibility for installation of material beyond 3 sheets and will not be held responsible for labor under any circumstances. For any questions, contact your local representative.

WEITZNER

Hanging Instructions

Fleur W5031

Do not cut or install until you have read these instructions. Weitzner recommends hiring a professional wallcovering installer. For a list of professional installers, please visit www.wallcoveringinstallers.org
View the hanging instructions video at www.weitznerlimited.com/videos/vinyl

- Trim material at the ceiling, baseboard, windows and doors with a single-edged razor blade.
- Always use a new, very sharp blade for each cut.

REPEAT:

- W 53" H 18"
- This wallcovering has a straight-match repeat pattern.
- We recommend lining up the repeat at eye level and allowing the top and bottom of the wallcovering to shift if necessary.

RECOMMENDATIONS:

- If you decide to hang multiple drops of this wallcovering, they should be trimmed and hung as they are unrolled. It is not recommended to reverse hang this wallcovering.
- Do not use steel-blade knives for smoothing the wallcovering or seams, as the steel will damage the vinyl surface.
- The wallcovering must be allowed to warm up to a minimum of 70°F (21°C) before installation.
- This wallcovering can be made permeable by a micro-venting process (minimum 8+ perms). However, permeable wallcovering cannot compensate for water intrusion caused by poor building design, faulty construction, building-system failure or improper maintenance practices.

- To prevent discolored seams and dull areas on the face of this wallcovering, it is important to carefully wash the excess adhesive from seams after installing each strip. Use a sponge dampened with clean, warm water, changed frequently, and dry with a clean, soft towel.
- Vinyl wallcovering can act as a vapor barrier and consequently should not be installed on walls that are susceptible to excessive condensation or moisture infiltration.
- Affix the wallcovering to the wall using a soft brush or wallcovering installation tool, and gently work out any air bubbles or wrinkles. Smoothing should be done from the middle of the wallcovering, working toward the outside edge.

CARE INSTRUCTIONS:

- Please see additional cleaning and warranty information for Weitzner's Clean Vinyl wallcoverings on the Cleaning and Maintenance Instructions.
- Existing mold or mildew must be removed from walls, followed by treatment to inhibit further growth. Refer to the EPA website for guidelines at www.epa.gov.

SPECIAL NOTES:

- \$3.00/yard additional fee for orders below 30 yards. IMO requirement must be specified with order.

CONTINUED >

Weitzner assumes no responsibility for installation of material beyond 3 sheets and will not be held responsible for labor under any circumstances. For any questions, contact your local representative.

WEITZNER

Clean Vinyl Wallcovering Cleaning and Maintenance Instructions

Do not cut or install until you have read these instructions. Weitzner recommends hiring a professional wallcovering installer. For a list of professional installers, please visit www.wallcoveringinstallers.org
View the Clean Vinyl wallcovering hanging instruction video at www.weitznerlimited.com/videos/vinyl

As with any quality product, proper care and routine maintenance of your wallcovering will safeguard your investment by helping to maintain its original beauty and finish, thereby extending its useful life. All Weitzner Clean Vinyl wallcoverings are finished with water based protective topcoating for enhanced cleanability.

The following general cleaning instructions should serve as a guide for normal maintenance practices.

GENERAL CLEANING

- Ordinary dirt and smudges can be removed by using a mild soap, warm water and bristle brush if necessary to remove dirt from the crevices of deeply textured patterns.
- We recommend Liquid Sunshine, made by Vermont Soap Organics, a non-toxic cleaner made with organic oils. It contains no sodium lauryl sulfate or other harsh detergents, alcohols, d-limonene, or synthetic chemicals. For more information, please visit www.vermontsoap.com
- Clean from the bottom of the wall upward and allow to soak for several minutes. Rinse thoroughly from the top of the wall down using clean water and a clean sponge (change rinse water often). Dry wallcovering with a soft, lint free cloth or towel. Repeat, if necessary.

SPECIAL CLEANING CONDITIONS

- For more difficult stains that are only surface deep, the use of a stronger detergent such as Fantastic, Formula 409 or similar non-abrasive household cleaner or isopropyl (rubbing) alcohol is recommended.
- Stains should be removed as quickly as possible to eliminate any possible reaction between the staining agent and wallcovering.
- Timeliness is especially important for removing stains that contain colorants or solvents such as ball point ink, lipstick, etc.

- Scrape off as much as possible and rub gently from the outside edge of the stain to the center to prevent spreading of the stain.

SANITIZING CARE

- Virex® Tb commercial cleaning solution can be used on all Weitzner Clean Vinyl wallcoverings. When used as directed, this one step cleaner, deodorizer and disinfectant shows proven resistance to damage even after multiple cleanings.
- The use of a dilute solution (5%) of chlorine bleach is acceptable for sanitization purposes. It is important to limit the set time and dry the surface after sanitization is complete. If other products are specified at your site, test a small inconspicuous area prior to cleaning to ensure there will be no damage to the wallcovering.
- Never use abrasive cleansers or steel wool as they can mar the surface. Do not use solvents such as nail polish remover as they will remove the topcoat finish.
- When using rubbing alcohol, first test on an inconspicuous area.
- **Never mix cleaning agents together – violent reactions can occur.**

CONTINUED >

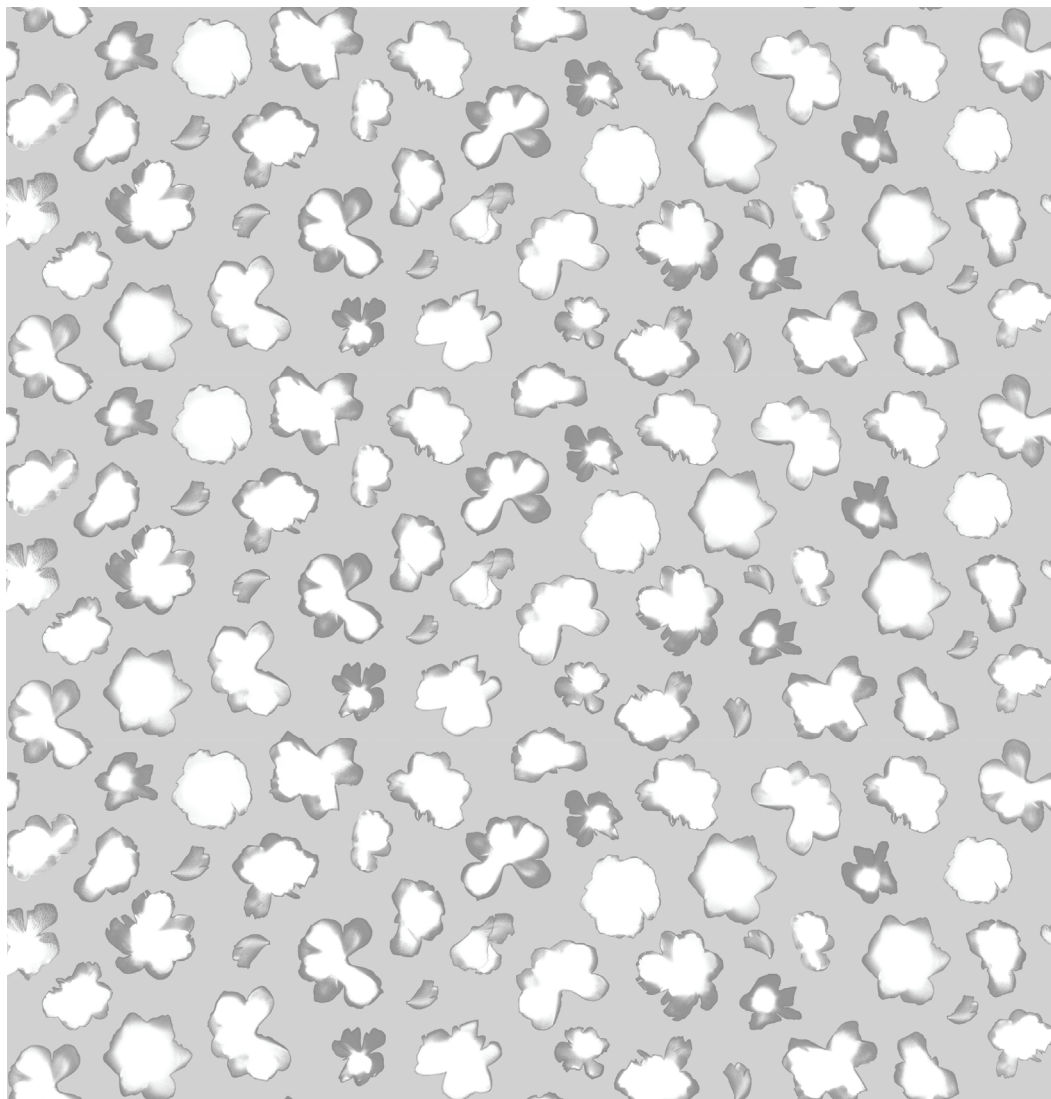
Weitzner assumes no responsibility for installation of material beyond 3 sheets and will not be held responsible for labor under any circumstances. For any questions, contact your local representative.

WEITZNER

FLEUR W5031

53" pattern width

18"
repeat



53" repeat