

# WEITZNER

## Hanging Instructions

### Chateau W1048

Do not cut or install until you have read these instructions. Weitzner recommends hiring a professional wallcovering installer. For a list of professional installers, please visit [www.wallcoveringinstallers.org](http://www.wallcoveringinstallers.org)  
View the hanging instructions video at [www.weitznerlimited.com/videos/paperbacked-fabric](http://www.weitznerlimited.com/videos/paperbacked-fabric)

#### WALLCOVERING PREPARATION:

- Do you have the right amount of wallcovering yardage? If not, stop and contact your local sales representative.
- Make sure your tools, hands and workspace are clean.
- Never crease the wallcovering, and avoid touching the face.
- Inspect the wallcovering before installing to ensure it is free from defects.
- Install a **maximum of 3 sheets**, then inspect application. If satisfactory, continue. If not, discontinue and contact your local sales representative.

#### WALL PREPARATION:

- Make sure the surface you are hanging on has been properly prepared.
- Walls should be clean, smooth, dry and structurally sound.
- Repair any holes or flaws in the walls prior to installing wallcovering.
- We recommend priming walls before installing the wallcovering using Zinsser® Shieldz® or equivalent wallcovering-specific primer.
- Do not hang wallcovering directly on an oil-based primer.

#### ADHESIVE:

- We recommend Roman® 838 or equivalent clear, non-strippable, starch-based adhesive.
- It is advisable to apply adhesive to the back of the wallcovering using the booking method, allowing 3 to 5 minutes for proper set-up time.
- Take care not to get any glue on the face of the wallcovering. If glue does get on the face of the wallcovering, immediately blot with a dry, clean, white cloth.

#### TRIMMING:

- The edges of this wallcovering are factory trimmed.
- We recommend trimming a clean, straight edge on your work table and butting the seams of this wallcovering.
- We do not recommend double cutting any of our paper-backed textiles.
- Trim material at the ceiling, baseboard, windows and doors with a single-edged razor blade.
- Always use a new, very sharp blade for each cut to avoid fraying.

**CONTINUED >**

Weitzner assumes no responsibility for installation of material beyond 3 sheets and will not be held responsible for labor under any circumstances. For any questions, contact your local representative.

# WEITZNER

## Hanging Instructions

### Chateau W1048

Do not cut or install until you have read these instructions. Weitzner recommends hiring a professional wallcovering installer. For a list of professional installers, please visit [www.wallcoveringinstallers.org](http://www.wallcoveringinstallers.org)  
View the hanging instructions video at [www.weitznerlimited.com/videos/paperbacked-fabric](http://www.weitznerlimited.com/videos/paperbacked-fabric)

#### REPEAT:

- W 4 1/2" H 4 1/2"
- This wallcovering has a straight-match repeat pattern.
- We recommend lining up the repeat at eye level and allowing the top and bottom of the wallcovering to shift if necessary.

#### RECOMMENDATIONS:

- If you decide to hang multiple drops of this wallcovering, they should be trimmed and hung as they are unrolled. It is not recommended to reverse hang this wallcovering.
- To avoid fraying, take care not to overwork the seam.
- Affix the wallcovering to the wall using a soft brush or wallcovering installation tool, and gently work out any air bubbles or wrinkles. Smoothing should be done from the middle of the wallcovering, working toward the outside edge.

#### CARE INSTRUCTIONS:

- Water and clear liquids should be removed immediately by blotting with a clean, dry, white cloth. A dry-cleaning solvent should be used for stains such as coffee, red wine, and oil. Spot test the wallcovering with the cleaning solvent

to ensure it doesn't leave a watermark.

- Regular vacuuming with a soft brush attachment may be used to remove dust deposits.

#### SPECIAL NOTES:

- This wallcovering has been treated with a stain-resistant finish.
- Not guaranteed against fading or color change. Avoid direct or brilliantly reflected sunlight.

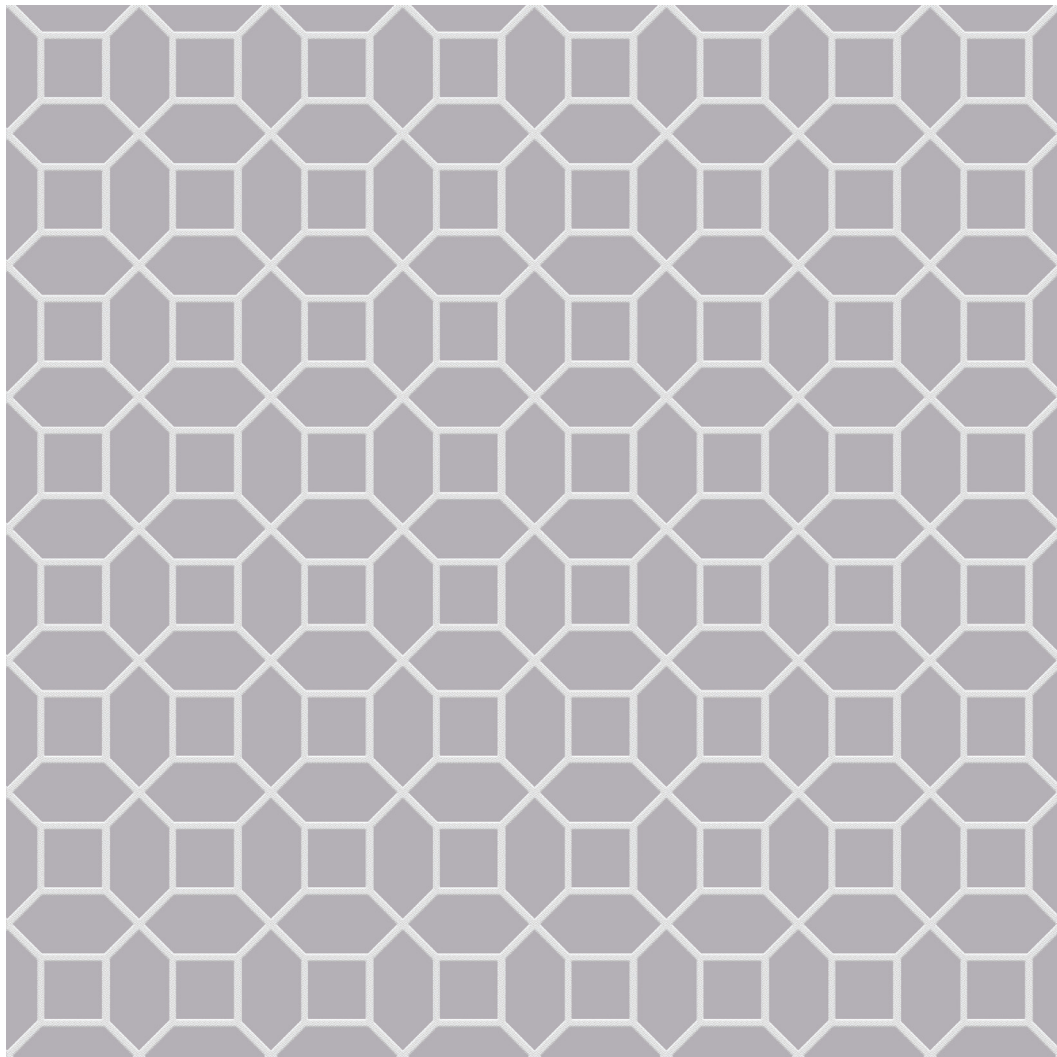
**CONTINUED >**

Weitzner assumes no responsibility for installation of material beyond 3 sheets and will not be held responsible for labor under any circumstances. For any questions, contact your local representative.

# W E I T Z N E R

CHATEAU W1048

← 36" Full width →



4 1/2  
repeat

← 4 1/2" repeat →

4 1/2"  
repeat