

WEITZNER

Hanging Instructions

Sonnet W1030

Do not cut or install until you have read these instructions. Weitzner recommends hiring a professional wallcovering installer. For a list of professional installers, please visit www.wallcoveringinstallers.org
View the hanging instructions video at www.weitznerlimited.com/videos/panels

WALLCOVERING PREPARATION:

- Do you have the right amount of wallcovering yardage? If not, stop and contact your local sales representative.
- Make sure your tools, hands and workspace are clean.
- Never crease the wallcovering, and avoid touching the face.
- Inspect the wallcovering before installing to ensure it is free from defects.
- Install a **maximum of 3 sheets**, then inspect application. If satisfactory, continue. If not, discontinue and contact your local sales representative.

WALL PREPARATION:

- Make sure the surface you are hanging on has been properly prepared.
- Walls should be clean, smooth, dry and structurally sound.
- Repair any holes or flaws in the walls prior to installing wallcovering.
- We recommend priming walls before installing the wallcovering using Zinsser® Shieldz® or equivalent wallcovering-specific primer.
- Do not hang wallcovering directly on an oil-based primer.

ADHESIVE:

- We recommend a mixture of Roman® 880 and Roman® 838, or equivalent adhesive.
- If a painted wall is used behind this open-work pattern, it is important to use a high quality latex paint. Allow the paint to dry completely and cure for at least 24 hours before adhering the wallcovering.
- We recommend watching the installation video for this product due to the specialty technique.
- Lay down a plastic liner. You will paste and cut the wallcovering directly on top of this liner. Cut wallcovering and plastic liner cleanly, using a straight edge and new blade for each cut. Take care not to overwork the material. Carefully lift wallcovering and liner paper from work table and apply adhesive.
- Apply wallcovering and liner paper to the wall using even strokes and moderate pressure. Trim excess material with a straight edge and fresh blade. Carefully peel back the liner from wallcovering and adhere pasted wallcovering to the wall.
- To prevent oxidation and color alteration of the surface, do not over-saturate the wallcovering.
- Take care not to get any glue on the face of the wallcovering. If glue does get on the face of the wallcovering, immediately blot with a dry, clean, white cloth.

CONTINUED >

Weitzner assumes no responsibility for installation of material beyond 3 sheets and will not be held responsible for labor under any circumstances. For any questions, contact your local representative.

WEITZNER

Hanging Instructions

Sonnet W1030

Do not cut or install until you have read these instructions. Weitzner recommends hiring a professional wallcovering installer. For a list of professional installers, please visit www.wallcoveringinstallers.org
View the hanging instructions video at www.weitznerlimited.com/videos/panels

- This paper stretches when moistened, and should be handled as little as possible during installation.

TRIMMING:

- The edges of this wallcovering are not factory trimmed.
- If you decide to trim this pattern to install multiple drops, we recommend trimming a clean, straight edge on your work table and butting the seams of this wallcovering.
- We do not recommend double cutting any of our handmade papers.
- Alternatively, you may overlap the pattern to create a continuous repeat.
- Always use a new, very sharp blade for each cut.
- Trim material at the ceiling, baseboard, windows and doors with a single-edged razor blade.

REPEAT:

- W 5 1/2" H 5 1/2"
- This wallcovering has a straight-match repeat pattern.
- We recommend lining up the repeat at eye level and allowing the top and bottom of the wallcovering to shift if necessary.

RECOMMENDATIONS:

- If you decide to hang multiple drops of this wallcovering, they should be trimmed and hung as they are unrolled. It is not recommended to reverse hang this wallcovering.
- Affix the wallcovering to the wall using a soft brush or wallcovering installation tool, and gently work out any air bubbles or wrinkles. Smoothing should be done from the middle of the wallcovering, working toward the outside edge.

CARE INSTRUCTIONS:

- Liquid stains should be removed immediately by blotting with a clean, dry, white cloth. Regular vacuuming with a soft brush attachment may be used to remove dust deposits.

SPECIAL NOTES:

- This wallcovering has been treated with a stain-resistant finish.
- Not guaranteed against fading or color change. Avoid direct or brilliantly reflected sunlight.
- CFA not available. Due to the handmade technique, variations in color and/or texture may occur.

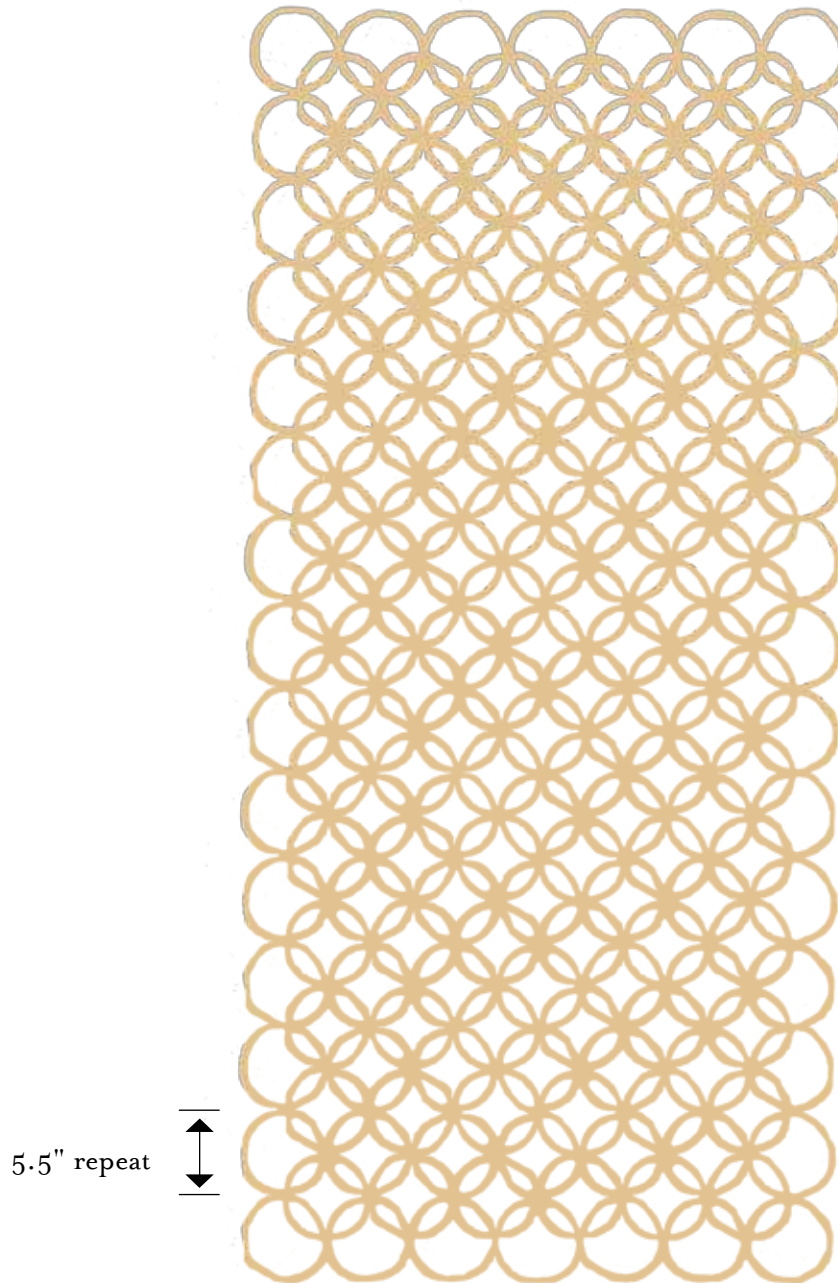
CONTINUED >

Weitzner assumes no responsibility for installation of material beyond 3 sheets and will not be held responsible for labor under any circumstances. For any questions, contact your local representative.

WEITZNER

SONNET W1030

← 39" full width →



5.5" repeat



5.5" repeat